

Response

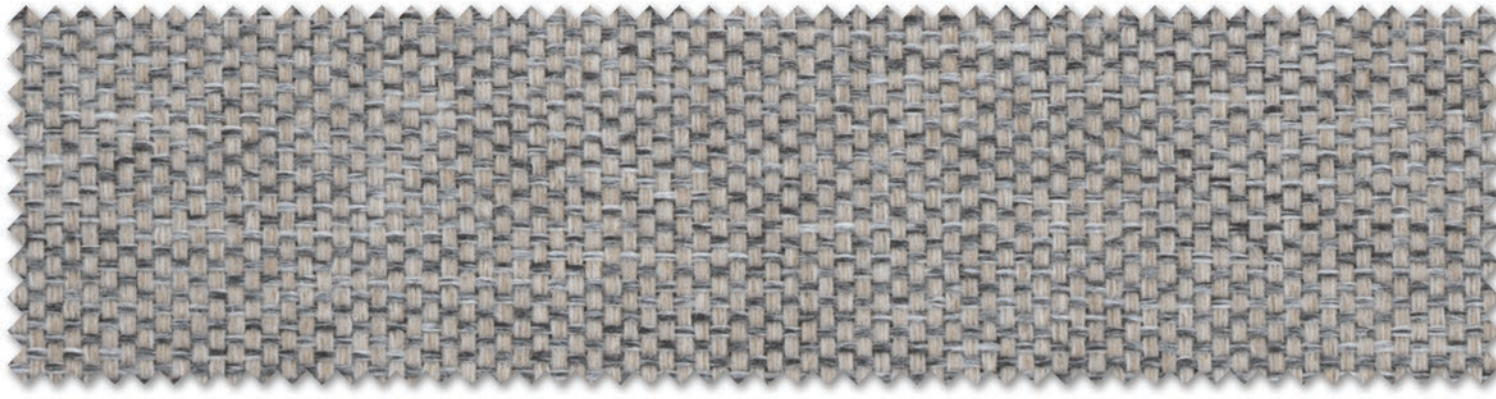
Fabrics



Fabrics For The World's Best Offices

BOND

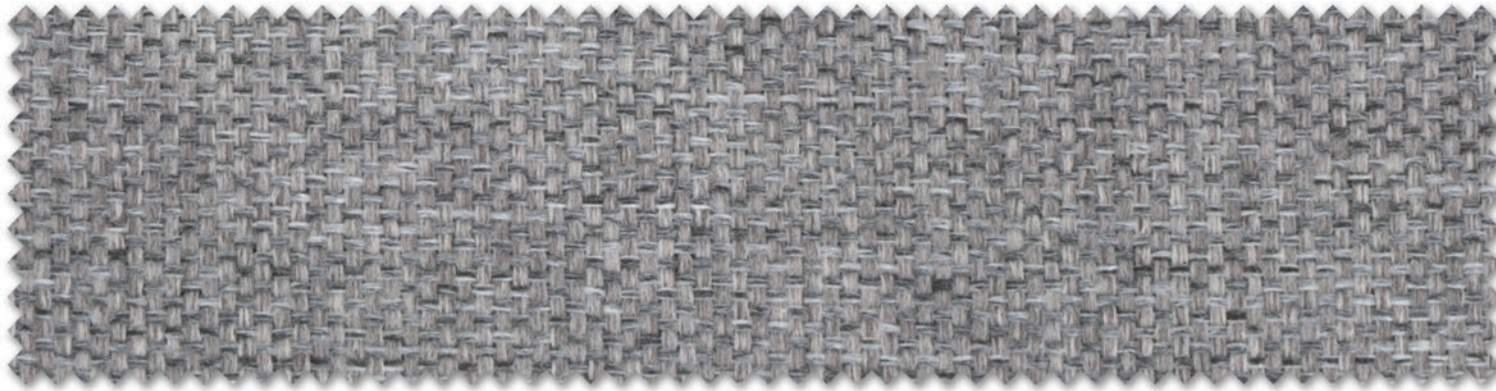




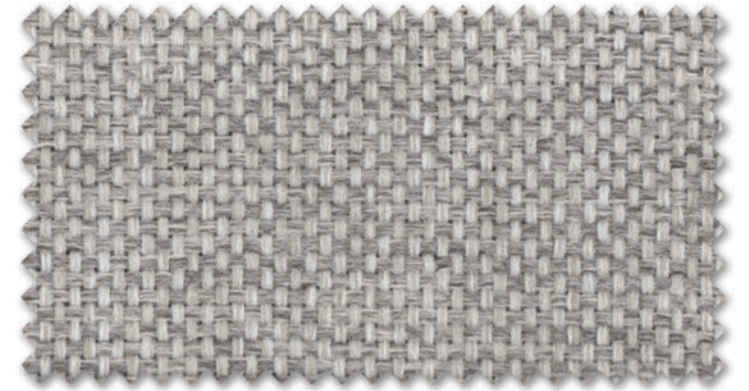
BOND 01



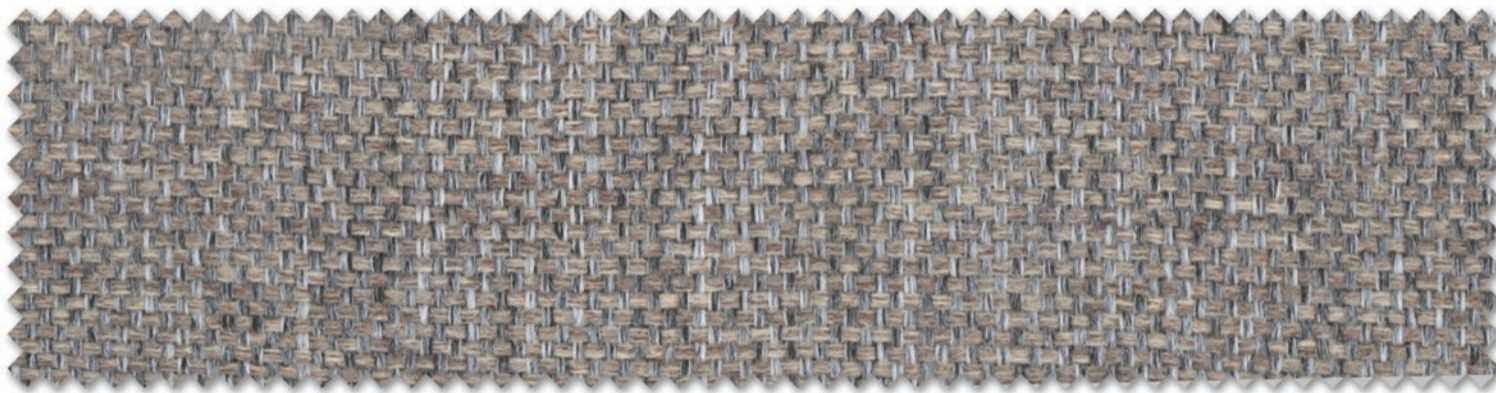
BOND 02



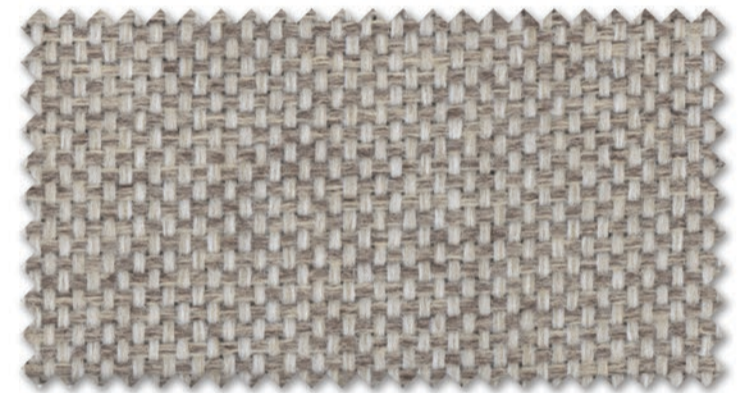
BOND 03



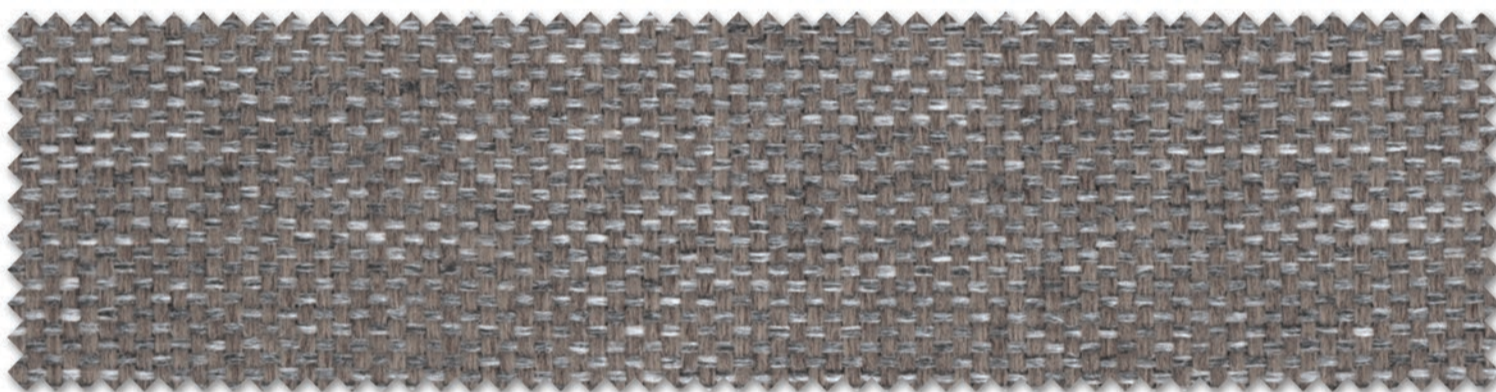
BOND 04



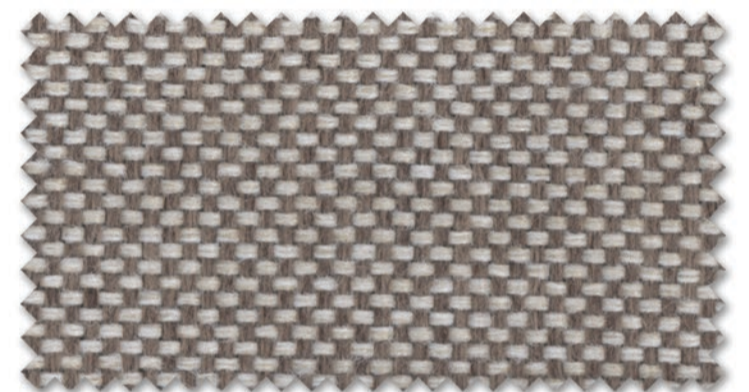
BOND 05



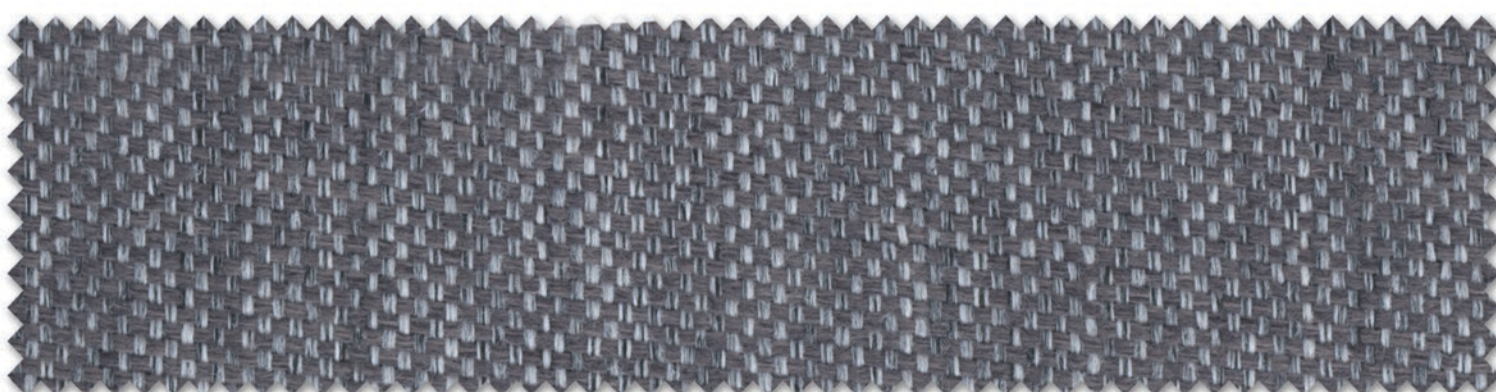
BOND 06



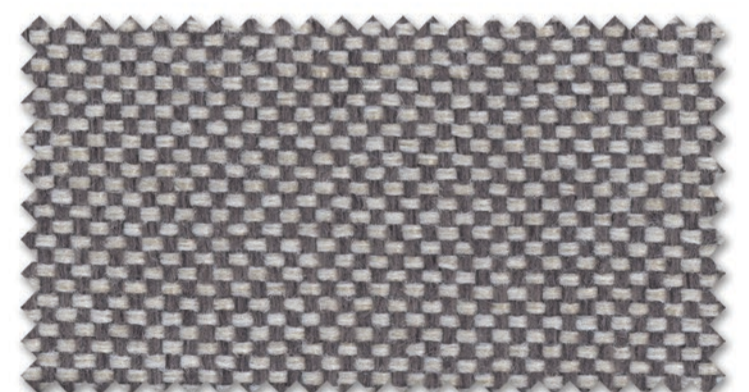
BOND 07



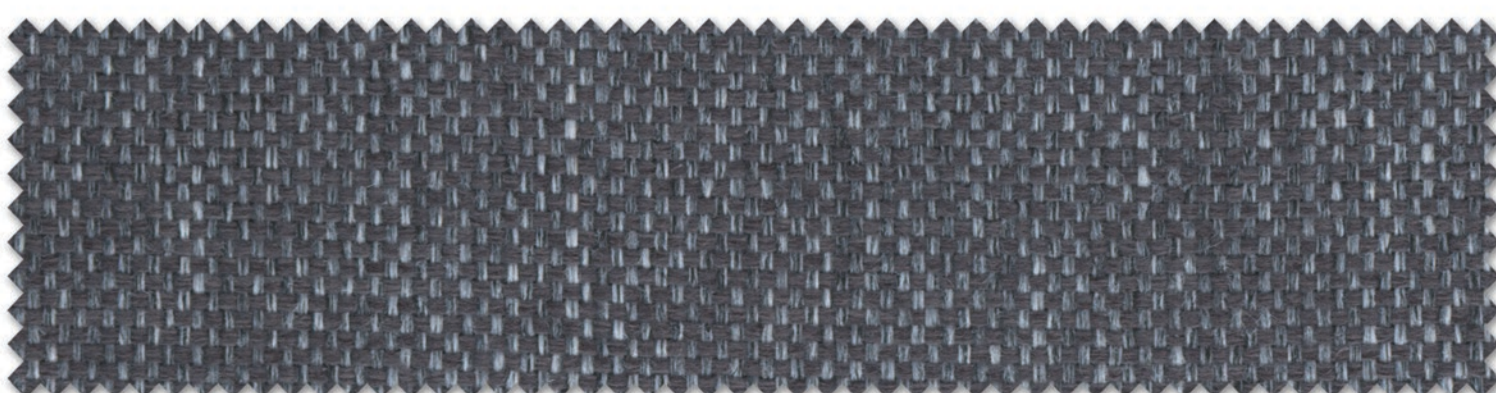
BOND 08



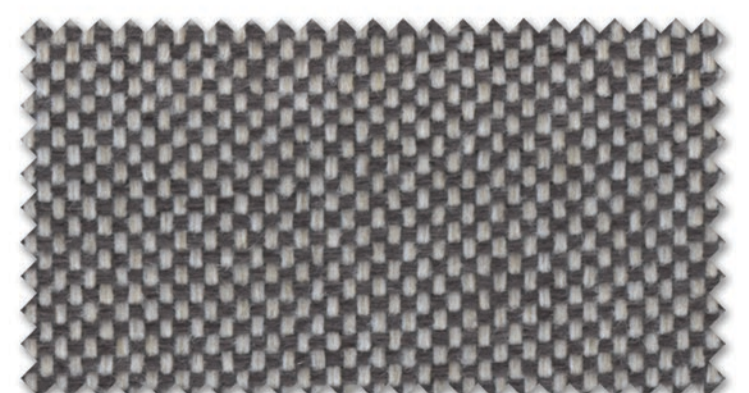
BOND 09



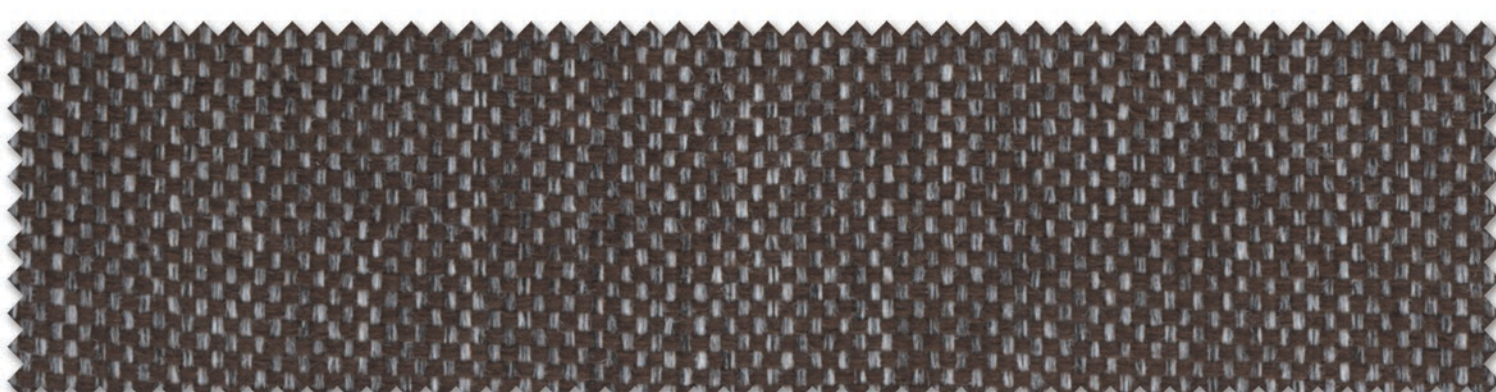
BOND 10



BOND 11



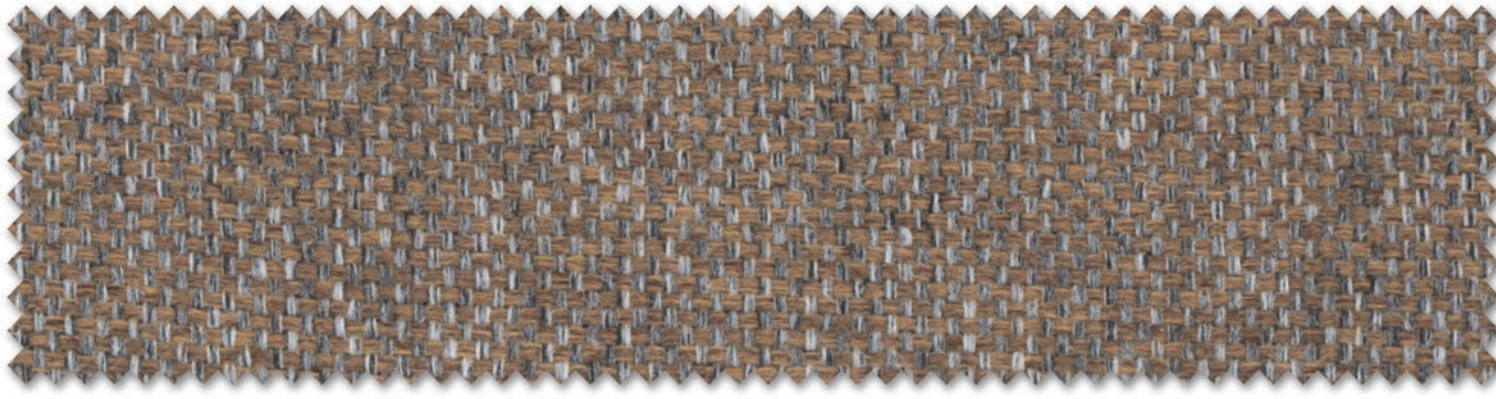
BOND 12



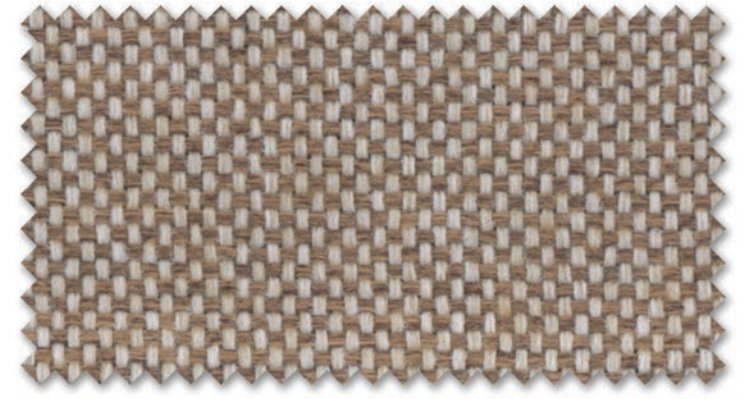
BOND 13



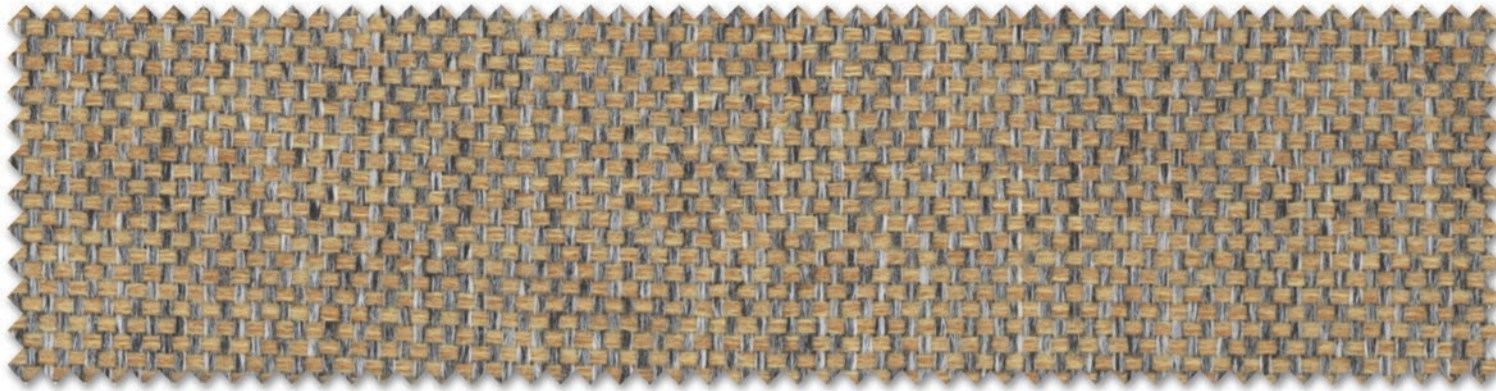
BOND 14



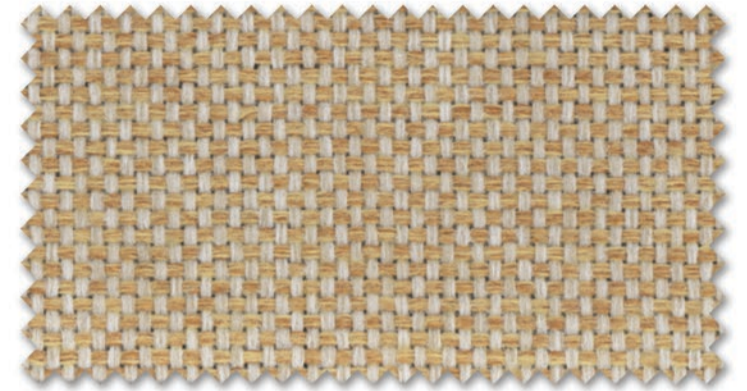
BOND 15



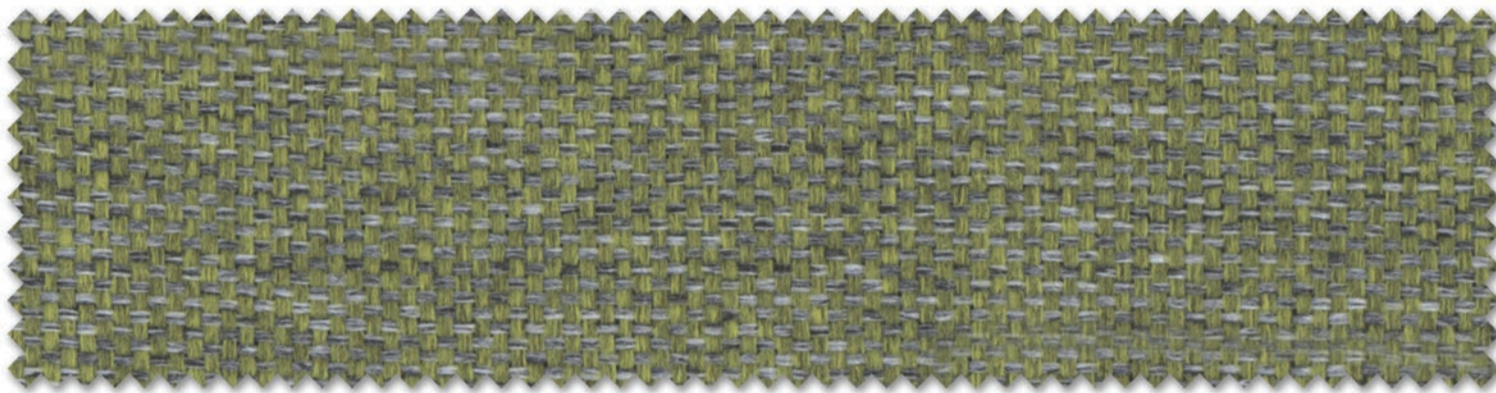
BOND 16



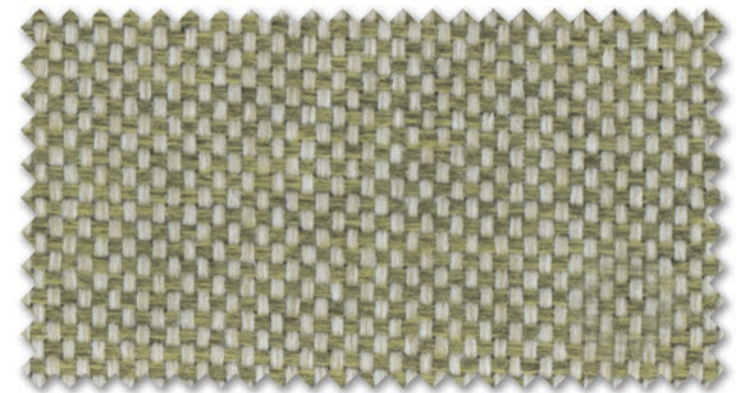
BOND 17



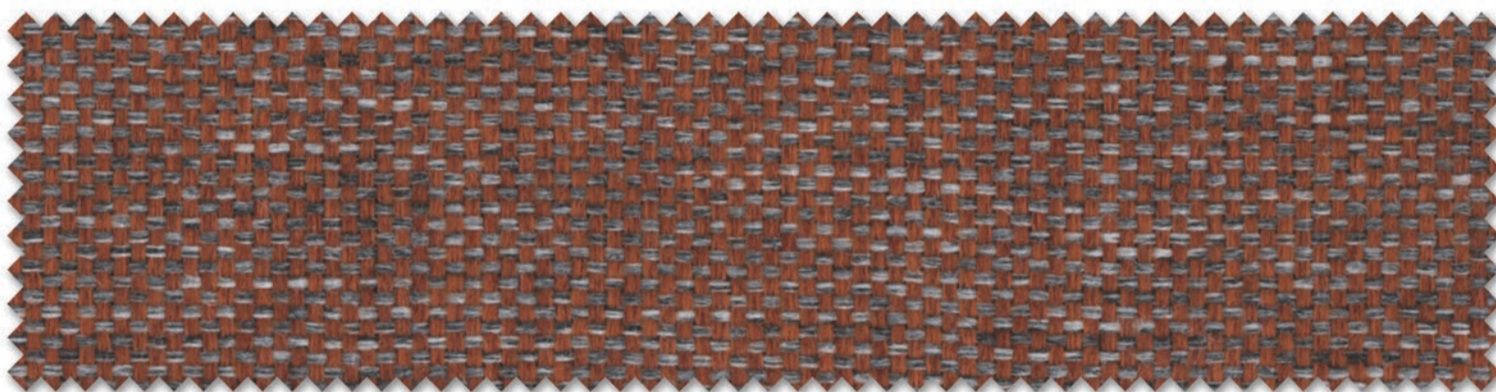
BOND 18



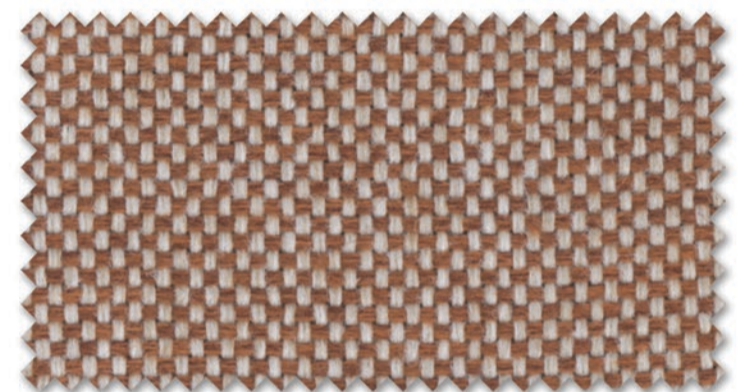
BOND 19



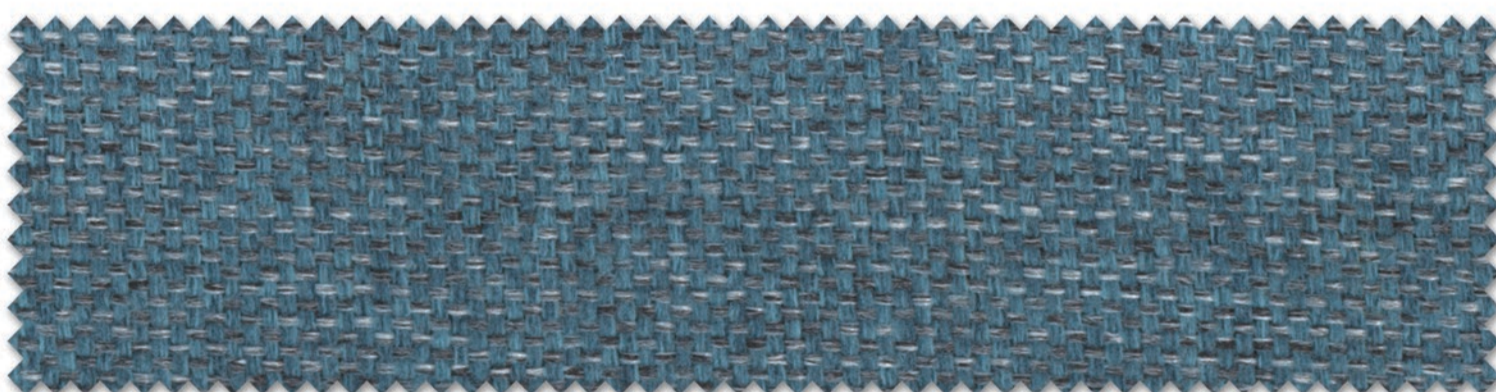
BOND 20



BOND 21



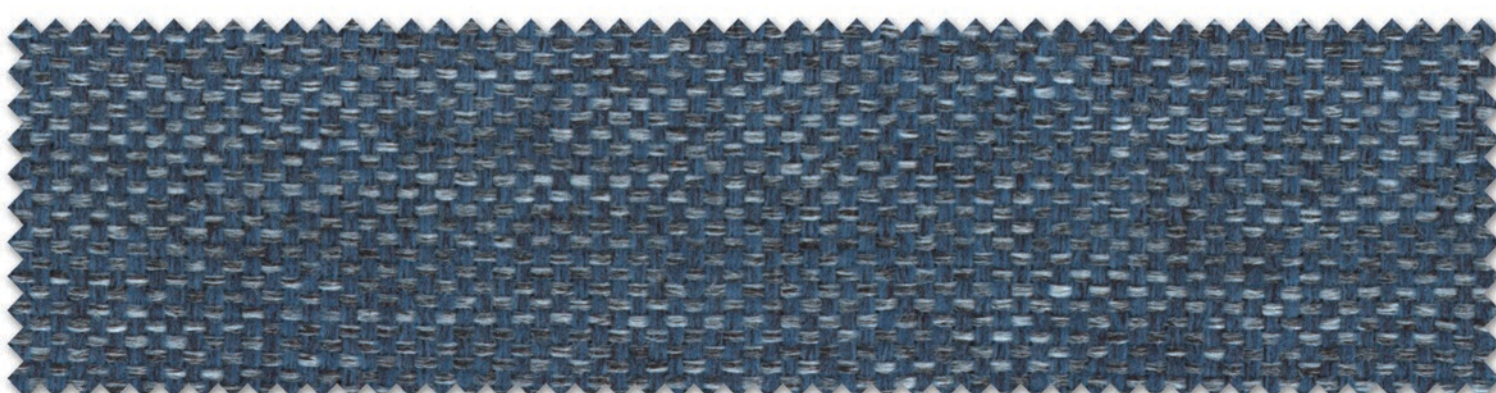
BOND 22



BOND 23



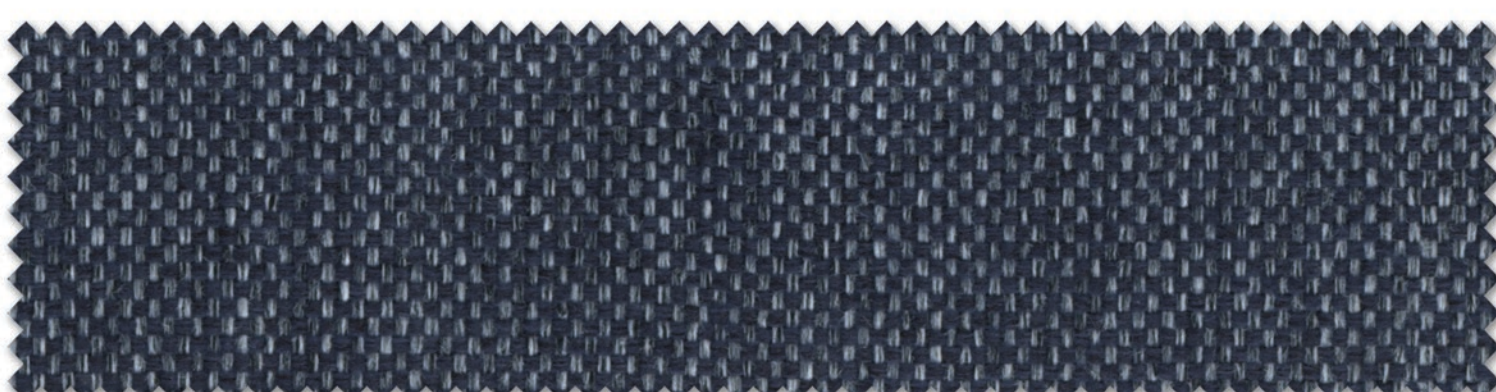
BOND 24



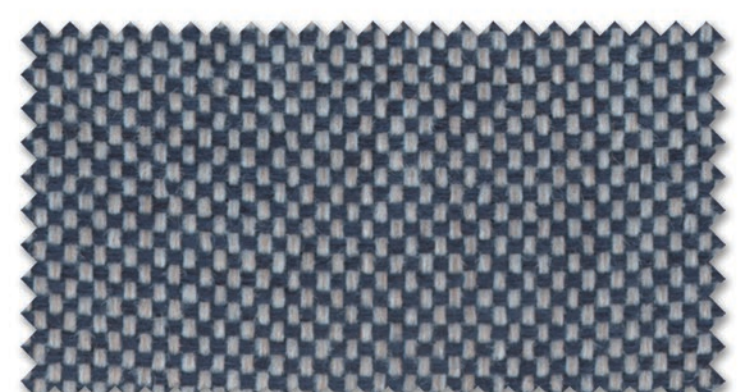
BOND 25



BOND 26



BOND 27

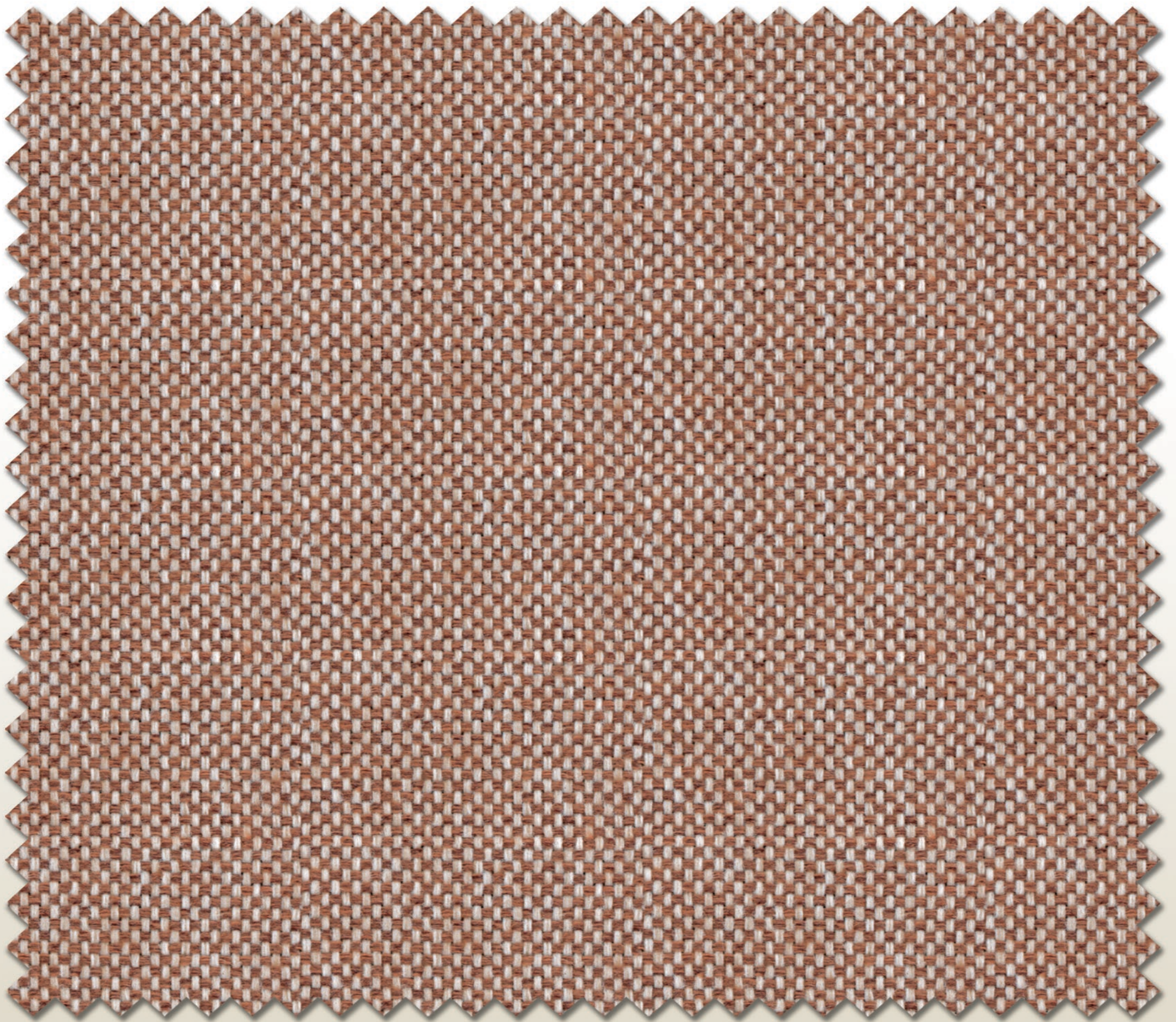


BOND 28

TECHNICAL SPECIFICATIONS

WIDTH	137 CMS / 54 INCHES $\pm 2\%$
USAGE	UPHOLSTERY, ACOUSTIC, AUDITORIUM SEATINGS, MODULAR FURNITURE
COMPOSITION	100% POLYESTER
WEIGHT	425 GRAMS/LINEAR METER $\pm 5\%$
FASTNESS TO LIGHT	ABOVE 5 ; ISO-105-BO2: 2014

FASTNESS TO RUBBING	WET:4 DRY:4.5; ISO-X12:2016
ABRASION	40000 Cycles (150:12947- 2:1688)
MAINTENANCE	PROFESSIONAL CLEANING IS RECOMMENDED
COLOUR MATCHING	BATCH TO BATCH VARIATION IN SHADE MAY OCCUR WITHIN COMMERCIAL TOLERANCES



THANK YOU

Response Fabrics TM

Fabrics For The World's Best Offices

Head Office: A2, Sector 21
Meerut Road Industrial Area
Ghaziabad, Uttar Pradesh, India - 201003